



## PRINCIPAL'S REPORT TO P&C

9 May 2023

### 1. School Review

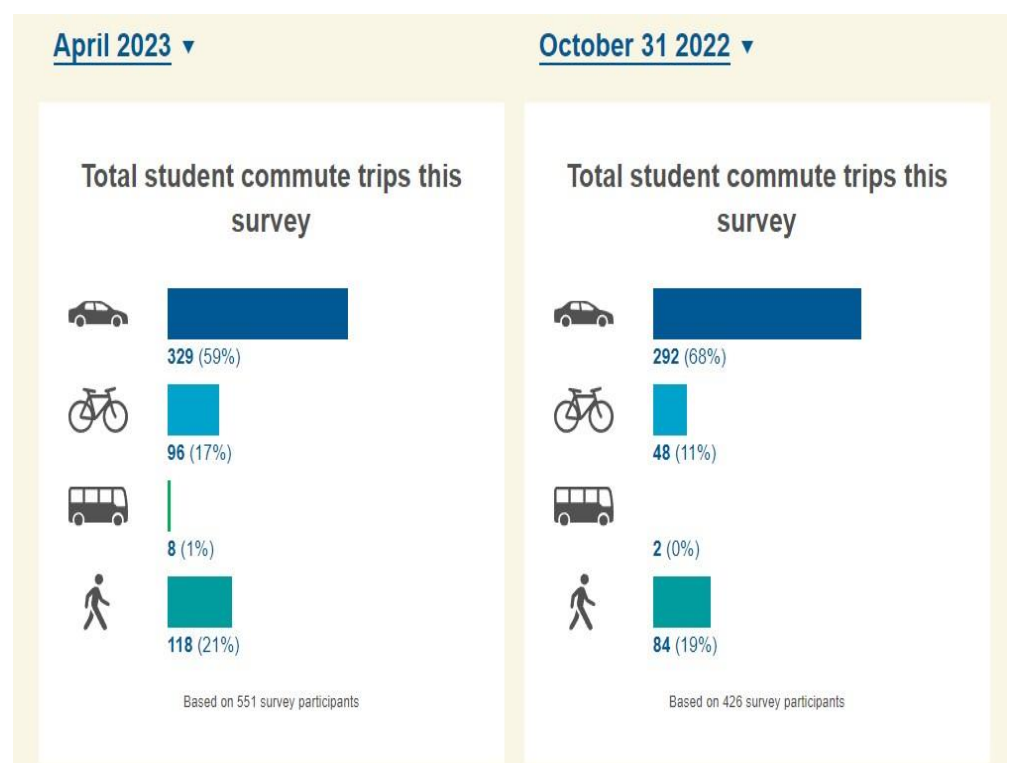
Our first Public School Review (PSR) was conducted on March 14. Thanks go to Amanda, Kylie and Christel who represented the P&C at the review. A copy of the PSR report was sent home via SchoolStream on April 6. It is also available on the school's website [School Overview - Grandis Primary School \(grandisps.wa.edu.au\)](https://www.grandisps.wa.edu.au). The school reviewers found that we "...submitted a comprehensive and rigorous school self-assessment." The following aspects of the school's self-assessment process were confirmed through the PSR:

- The school's Electronic School Assessment Tool (ESAT) submission was constructed in alignment with the Standard and provided a succinct narrative of school performance against each domain.
- In preparation for the Public School Review, the leadership team led a self-assessment process that engaged and incorporated the perspectives of a range of staff and school community representatives.
- A broad selection of staff, student and parent representatives engaged enthusiastically during the validation phase, contributing authentic reflections in support of the school improvement agenda.
- Validation visit meetings strengthened the review team's understanding of the evidence in the school's ESAT submission. Participants delivered strong and consistent messages that built on claims in all domains throughout the meetings.
- The input of students in the form of a guided tour of the learning environment and meetings with members of the parent body and community, served to support the school's self-assessment.
- The leadership team noted how the ESAT preparation had enabled staff to share the work being done across the school to reinforce the strong positive culture that builds engagement and reflective practice

### 2. Your Move Program

In April the school conducted a 'Hands Up' survey to collect baseline data around how students travel to and from school. Comparison of data collected at the end of last year shows that the percentage of students riding and walking to school has increased while the number coming by car is decreasing.

As part of the Your Move program the school is encouraging more



students to get active by increasing walking, scooting and riding to school. [Your Move: More Ways to Get There - Department of Transport](#) This will also help to decrease traffic congestion around the school.

National Walk Safely to School Day is being held on Friday May 19. The school has been sent a pile of temporary tattoos to hand out to students who walk/ride/scoot to school on this day. This would be a great activity for the P&C to support as they did for the Ride to School Day earlier in the year.

### 3. Containers for Change

Many thanks go to Christel and her team for their organization of the Containers for Change competition last week. This was very well received by staff, students and the community and shows the level of support that we enjoy from everyone at our school. The school will be happy to support this activity on a regular basis.



### 4. Fundraising Plan 2023

Student Councilors will be supporting Beanies for Brain Cancer on Friday June 16 with proceeds going to the Mark Hughes Foundation. <https://beanie.markhughesfoundation.com.au/>

Linda Loo who is the grandmother of one of our students has donated a large print for us to raffle in order to raise funds for NAIDOC Week activities. Linda values the print at approximately \$1850. The school would like to direct the proceeds towards compensating a NAIDOC Week incursion that we have planned. The cost of the incursion is \$1980.

Would the P&C like to run this raffle on behalf of the school?

An updated copy of the 2023 plan is included with this report.

**Stephen Bevan**  
Principal

